

Dean Trust Rose Bridge Vision for Careers

At Dean Trust Rose Bridge, high quality, impartial careers guidance will help pupils to make informed choices about which courses suit their academic needs and aspirations. They will be prepared through cumulatively sufficient knowledge and skills for future learning and employment through both our curriculum and Careers Programme.

LINK TO SCHOOL IMPROVEMENT PRIORITIES

- To meet all Gatsby benchmarks
- Continue to reduce the number of NEET students



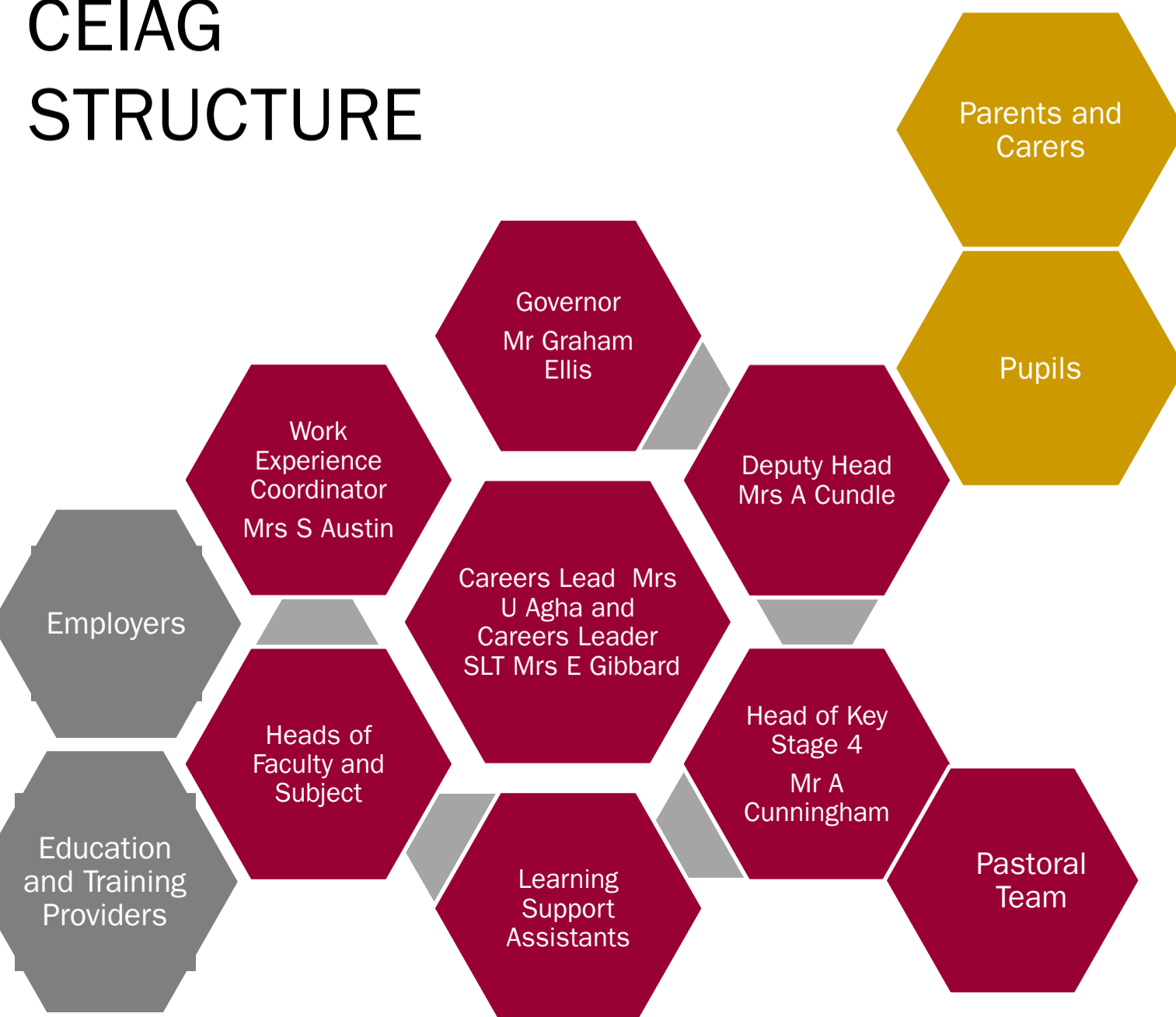
	AUTUMN 1 (SEPTEMBER – OCTOBER)	AUTUMN 2 (NOVEMBER – DECEMBER)	SPRING 1 (JANUARY – FEBRUARY)	SPRING 2 (FEBRUARY – MARCH)	SUMMER 1 (APRIL – MAY)	SUMMER 2 (JUNE – JULY)
YEAR 7 Careers Advisor attends Parents Evening.	<ul style="list-style-type: none"> PSHE activity: Pupils will complete a series of self awareness activities during PSHE Careers letter/pamphlet sent home to all year groups that Signposts pupils and parents to the careers Section of the school website and informs them how to use the various websites For independent careers guidance. Curriculum and Careers: One Entry Task and careers HW per half term Pupil Audit 	<ul style="list-style-type: none"> Curriculum and Careers: One Entry Task and careers HW per half term Meet the Careers Advisor assembly Careers Café: Lunchtime- drop ins Careers Fair 	<ul style="list-style-type: none"> Curriculum and Careers: One Entry Task and careers HW per half term Careers Café: Lunchtime- drop ins 	<ul style="list-style-type: none"> Curriculum and Careers: One Entry Task and careers HW per half term National Careers and Apprenticeship Week: All curriculum areas will deliver a careers based lesson. This will be used to inspire pupils and raise awareness of the variety of careers that are linked to their subject to connect students learning to 'real life'. A "Girls Week" as part of International Women's Day celebrations could see students from all years take part in a week-long programme based on equality issues and breaking down career and gender stereotypes. 	<ul style="list-style-type: none"> Curriculum and Careers: One Entry Task and careers HW per half term Industry assembly 	<ul style="list-style-type: none"> Curriculum and Careers: One Entry Task and careers HW per half term
YEAR 8 Careers Advisor attends Parents Evening.	<ul style="list-style-type: none"> Careers letter/pamphlet sent home to all year groups that Signposts pupils and parents to the careers Section of the school website and informs them how to use the various websites For independent careers guidance Curriculum and Careers: One Entry Task and careers HW per half term Pupil Audit 	<ul style="list-style-type: none"> Curriculum and Careers: One Entry Task and careers HW per half term Meet the Careers Advisor assembly Careers Café: Lunchtime- drop ins Careers fair 	<ul style="list-style-type: none"> Curriculum and Careers: One Entry Task and careers HW per half term Careers Café: Lunchtime- drop ins 	<ul style="list-style-type: none"> Curriculum and Careers: One Entry Task and careers HW per half term National Careers and Apprenticeship Week: All curriculum areas will deliver a careers based lesson. This will be used to inspire pupils and raise awareness of the variety of careers that are linked to their subject to connect students learning to 'real life'. A "Girls Week" as part of International Women's Day celebrations could see students from all years take part in a week-long programme based on equality issues and breaking down career and gender stereotypes. 	<ul style="list-style-type: none"> Invited to lunchtime drop-in sessions with employers, and education and training providers. Industry assembly Curriculum and Careers: One Entry Task and careers HW per half term 	<ul style="list-style-type: none"> Curriculum and Careers: One Entry Task and careers HW per half term Invited to lunchtime drop-in sessions with employers, and education and training providers.
YEAR 9 Careers Advisor attends Parents Evening.	<ul style="list-style-type: none"> Careers letter/pamphlet sent home to all year groups that Signposts pupils and parents to the careers Section of the school website and informs them how to use the various websites For independent careers guidance Curriculum and Careers: One Entry Task and careers HW per half term Pupil Audit 	<ul style="list-style-type: none"> Curriculum and Careers: One Entry Task and careers HW per half term Launch of options programme Careers Café: Lunchtime- drop ins GM Higher- Interview techniques assembly Careers Fair 	<ul style="list-style-type: none"> Curriculum and Careers: One Entry Task and careers HW per half term Careers Café: Lunchtime- drop ins 	<ul style="list-style-type: none"> Year 9 Pathways choices made with CEIAG provided to pupils and parents about the value of each curriculum area, including Labour Market Information. Curriculum and Careers: One Entry Task and careers HW per half term National Careers and Apprenticeship Week: All curriculum areas will deliver a careers based lesson. This will be used to inspire pupils and raise awareness of the variety of careers that are linked to their subject to connect students learning to 'real life'. A "Girls Week" as part of International Women's Day celebrations could see students from all years take part in a week-long programme based on equality issues and breaking down career and gender stereotypes. 	<ul style="list-style-type: none"> Curriculum and Careers: One Entry Task and careers HW per half term 1:1 guidance provided to EHCP pupils by the Careers Adviser in preparation for attendance at Annual Review meetings. Industry assembly 	<ul style="list-style-type: none"> Curriculum and Careers: One Entry Task and careers HW per half term 1:1 guidance provided to EHCP pupils by the Careers Adviser in preparation for attendance at Annual Review meetings.
YEAR 10 Careers Advisor attends Parents Evening.	<ul style="list-style-type: none"> Welcome to Key Stage 4 Evening includes an overview of the CEIAG Strategy for Parents and Carers Careers letter/pamphlet sent home to all year groups that Signposts pupils and parents to the careers Section of the school website and informs them how to use the various websites For independent careers guidance Curriculum and Careers: One Entry Task and careers HW per half term Meet the Careers Advisor assembly Pupil Audit 	<ul style="list-style-type: none"> Local FE colleges, Apprenticeship Providers and Greater Manchester Higher attend Year 10 Progress Evening. Curriculum and Careers: One Entry Task and careers HW per half term Careers Café: Lunchtime- drop ins Careers Fair Work experience launch 	<ul style="list-style-type: none"> Careers Assemblies: Bolton College, Wigan and Leigh College and SJR College Curriculum and Careers: One Entry Task and careers HW per half term Careers Café: Lunchtime- drop ins PSHE-Year 10 CV Writing workshops 	<ul style="list-style-type: none"> The UK University & Apprenticeship Search fair Curriculum and Careers: One Entry Task and careers HW per half term National Careers and Apprenticeship Week: All curriculum areas will deliver a careers based lesson. This will be used to inspire pupils and raise awareness of the variety of careers that are linked to their subject to connect students learning to 'real life'. Greater Manchester Higher assembly to promote their University Summer Schools. A "Girls Week" as part of International Women's Day celebrations could see students from all years take part in a week-long programme based on equality issues and breaking down career and gender stereotypes. 	<ul style="list-style-type: none"> Assembly- Work Experience 'What if?' Careers Assemblies: Bolton Sixth Form College and Winstanley College Work Experience Visits Curriculum and Careers: One Entry Task and careers HW per half term Industry assembly Wigan & Leigh College Sampling Day 	<ul style="list-style-type: none"> Curriculum and Careers: One Entry Task and careers HW per half term Assembly- Work Experience & Employability Skills. Work experience Attendance at GM Higher Summer Schools (individual basis) 1:1 guidance provided to EHCP pupils by the Careers Adviser in preparation for attendance at Annual Review meetings.
YEAR 11 Careers Advisor attends Parents Evening.	<ul style="list-style-type: none"> Welcome to Year 11 Evening includes an overview of the CEIAG Strategy for Parents and Carers, with the local FE colleges, GM Higher and Apprenticeship providers in attendance. Careers letter/pamphlet sent home to all year groups that Signposts pupils and parents to the careers Section of the school website and informs them how to use the various websites For independent careers guidance Curriculum and Careers: One Entry Task and careers HW per half term Careers Assemblies: Winstanley College, Bolton College Wigan and Leigh College, Wigan Warriors, SJR College Meet the Careers Advisor assembly Pupil Audit Post 16- Destination data 	<ul style="list-style-type: none"> 1:1 guidance provided to EHCP pupils by the Careers Adviser in preparation Pupils provided with resources, time and support during Form Time to complete their Personal Statement ready for the post-16 applications. Careers Assembly: Creative Careers, St Helens College, Bolton Sixth Form College Curriculum and Careers: One Entry Task and careers HW per half term Careers Café: Lunchtime- drop ins Careers Fair 	<ul style="list-style-type: none"> Assemblies from each of the main local providers including 6th Form colleges, 6th Form schools, and Apprenticeship providers. Careers Café: Lunchtime- drop ins Curriculum and Careers: One Entry Task and careers HW per half term All pupils to register an account with "findmyapprenticeship.com" Assemblies from each of the main local providers including 6th Form colleges, 6th Form schools, and Apprenticeship providers. 1:1 guidance meetings provided to all pupils, prioritising EHCP pupils, followed by PP, SEND and other. PSHE-Year 11 CV Writing workshops 	<ul style="list-style-type: none"> The UK University & Apprenticeship Search fair 1:1 interviews with our careers advisor Curriculum and Careers: One R5 and careers HW per half term National Careers and Apprenticeship Week: All curriculum areas will deliver a careers based lesson. This will be used to inspire pupils and raise awareness of the variety of careers that are linked to their subject to connect students learning to 'real life'. 1:1 guidance meetings provided to all pupils, prioritising EHCP pupils, followed by PP, SEND and other. Careers Adviser in attendance at Year 11 Revision Launch evening, providing 1:1 meetings involving parents and carers where requested. EHCP pupils followed by PP, SEND and other. PSHE-Year 11 CV Writing workshops 	<ul style="list-style-type: none"> Invited to lunchtime drop-in sessions with employers, and education and training providers. 1:1 guidance meetings provided, revisiting targeted pupils. Assembly- Life after DTRB, DTRB Leavers social media page launched. Industry assembly Curriculum and Careers: One Entry Task and careers HW per half term 	<ul style="list-style-type: none"> Leavers invited to attend further guidance meetings are required. Communication made and further information provided remotely using the DTRB Leavers social media page. Support available on GCSE Results Day includes the attendance of the Careers Adviser and the School Liaison teams from each of the local colleges and apprenticeship providers. Permissions are sought from the leavers to permit communication and sharing of destination data between school and the local authority to aid collaborative support.

Exposure of pupils to the 6 growth industries within Greater Manchester remains a priority for our Applied Learning curriculum and employer encounters thus improving the readiness of young people to enter the local labour market. Labour Market Information is made accessible for all stakeholders; pupils, parents and teachers are encouraged to engage with the data to inform discussions around careers and post-16 options.

Post 16 Support:

- Contact is maintained using DTRB Leavers' social media page.
- Motivational information, LMI, employment, education and training opportunities are promoted generally and to specifically targeted leavers.
- Support with the update of Personal Statements, CVs and letters of application is offered and leavers are invited back into school to meet with the Careers Adviser.
- School receives an update from the authority. Interventions are made for NEET or suspected NEET leavers on an individual basis.

CEIAG STRUCTURE



CREATIVE MEDIA & TECHNOLOGY



ENERGY & ENVIRONMENT



FINANCIAL, PROFESSIONAL & BUSINESS SERVICES



LIFE SCIENCE AND HEALTHCARE



LOGISTICS



ADVANCED MANUFACTURING

EHCP	Pupils with an EHCP receive 1:1 CEIAG meetings from Year 9-11, and in Year 11 the support is limitless. The Careers Adviser attends Annual Review meetings from Year 9-11, to liaise with relevant agencies to support parents and carers with the transition too. The EHCP Mentor will also provide support with individual needs, supporting travel arrangements, attendance at open events and interviews.
PP	Pupils with a PP status receive their 1:1 guidance meetings after EHCP pupils have been seen. Parental engagement is a priority for these young people and as such parents/ carers are invited in to attend the guidance meetings. A record of the meeting and any information to support the action plan will be posted home.
SEND	Pupils with a SEND status will be prioritised above non-SEND and will receive their 1:1 guidance meeting in advance. The Careers Adviser would be familiar with the individual's SEND and make appropriate suggestions for post-16 options, collaborating with the providers and the in-school Mentors. Parents are kept informed at events and also with hard copies of interview records posted home.
LAC	Depending on any additional needs, LAC pupils will then be seen in advance of any pupils without a specific profile. Their action plans and supporting information will be provided to relevant stakeholders.

DESTINATION DATA

Education Provider	Number of Pupils
Wigan and Leigh College	78
St John Rigby College	5
Other providers –, Runshaw. Deanery 6th form, St. Helens College, Bolton 6th form Wigan Athletic,, Growth Company, TMP	28
Wigan Warriors	3
Bolton College	2
Winstanley College	4
Apprenticeships	10
NEET/unknown	3
Total	133
Course Levels	
Level	Number of Pupils
3 (A levels BTEC extended diploma)	Awaiting destination data
2 (NVQ2 or BTEC 2)	
1 (NVQ1 or BTEC 1)	
Entry level	
Other	
Total	

1 A STABLE CAREERS PROGRAMME	2 LEARNING FROM CAREER AND LABOUR MARKET INFORMATION	3 ADDRESSING THE NEEDS OF EACH PUPIL	4 LINKING CURRICULUM LEARNING TO CAREERS
5 ENCOUNTERS WITH EMPLOYERS AND EMPLOYEES	6 EXPERIENCES OF WORKPLACES	7 ENCOUNTERS WITH FURTHER AND HIGHER EDUCATION	8 PERSONAL GUIDANCE

Good Career Guidance: Start mapped to the Gatsby benchmarks

BENCHMARK 1: A STABLE CAREERS PROGRAMME	<ul style="list-style-type: none"> A free and sustainable online platform for delivering careers information Underpinned by a programme for students in Years 7 to 13 Accessible to all students, staff and parents
BENCHMARK 2: LEARNING FROM CAREER & LABOUR MARKET INFORMATION	<ul style="list-style-type: none"> Localised career and labour market information from LMI for All Impartial information on all study options at GCSE, post-16 and 18 Live course information and apprenticeship vacancies
BENCHMARK 3: ADDRESSING THE NEEDS OF EACH PUPIL	<ul style="list-style-type: none"> A student profile to personalise content, career and future study information Learning modules for all ages to guide students through moments of choice Tools to capture and share inspiring alumni stories
BENCHMARK 4: LINKING CURRICULUM LEARNING TO CAREERS	<ul style="list-style-type: none"> Subject-led careers and future study search Employer-led information linking subject knowledge application in work Content and tools promoting classroom skills-learning to employability
BENCHMARK 5: ENCOUNTERS WITH EMPLOYERS AND EMPLOYEES	<ul style="list-style-type: none"> Employer profiles offering an insight in to work and employment Employer-led skills content and Three Minute Hero career stories An online Locker to record and evidence encounters with employers
BENCHMARK 6: EXPERIENCES OF WORKPLACES	<ul style="list-style-type: none"> Advice to help prepare for and make the most of work placements and visits Action plan tools to manage the process of securing work experience An online Locker to evidence impact of work experience and part time jobs
BENCHMARK 7: ENCOUNTERS WITH FURTHER AND HIGHER EDUCATION	<ul style="list-style-type: none"> Learning modules to explore and demystify all post-16 and 18 pathways Comprehensive, impartial information on all academic and vocational routes Every post-16 and post-18 provider profiled with full course information
BENCHMARK 8: PERSONAL GUIDANCE	<ul style="list-style-type: none"> Student registration data and personal profiles to inform guidance interviews Age-appropriate modules to prepare students for key moments of choice Action plan tools to support and enhance the guidance process