

**Dean Trust Rose Bridge  
Vision for Careers**

At Dean Trust Rose Bridge, high quality, impartial careers guidance will help pupils to make informed choices about which courses suit their academic needs and aspirations. They will be prepared through cumulatively sufficient knowledge and skills for future learning and employment through both our curriculum and Careers Programme.

**LINK TO SCHOOL  
IMPROVEMENT  
PRIORITIES**

To continue to reduce the Neet figure to as close to zero as possible

Achieve all Gatsby benchmarks 80%

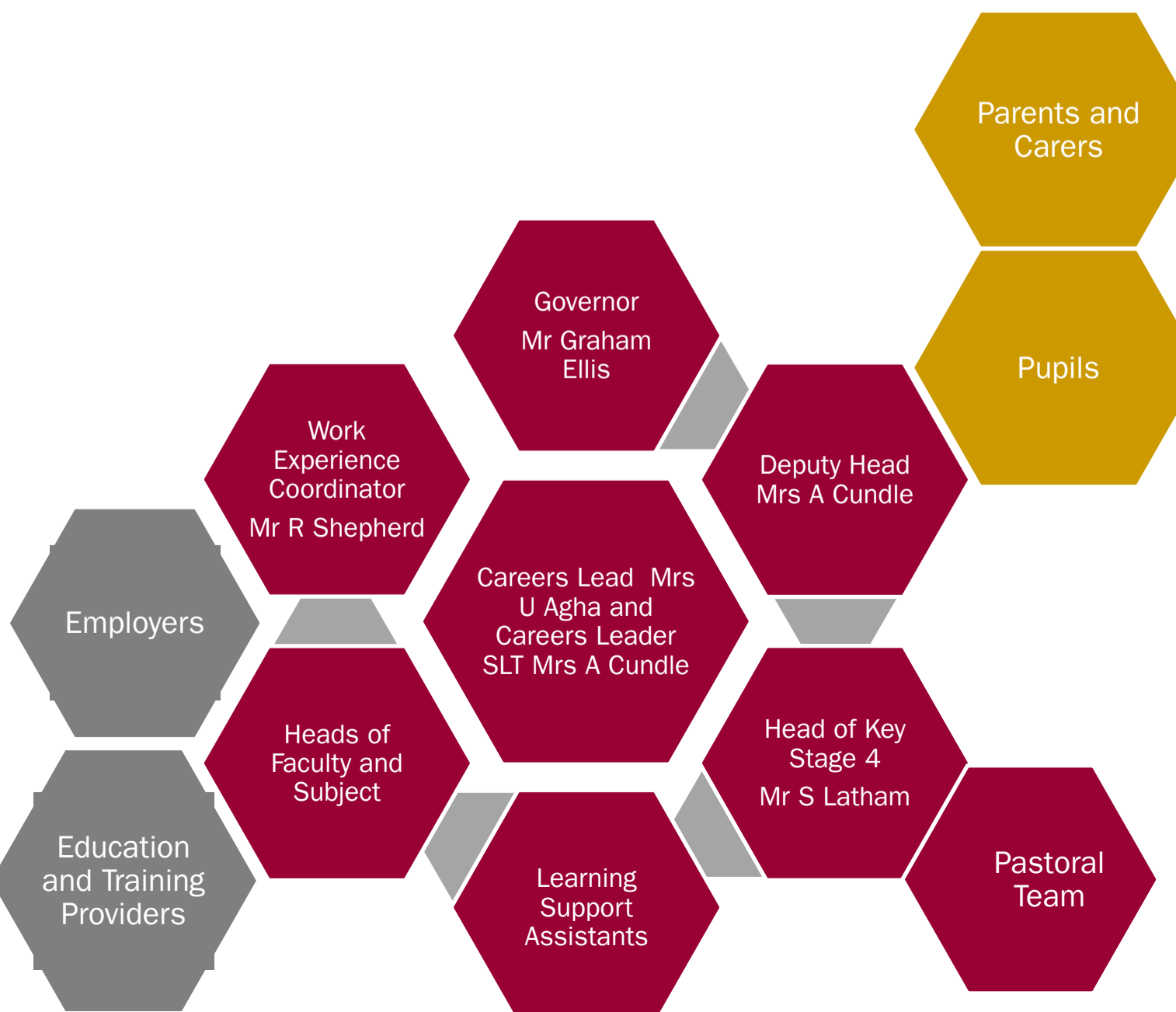
Successful implementation of new Social Sciences Faculty

Further enhance the KS4 curriculum offer to include H&B and Construction Level 2 qualifications

	<b>AUTUMN 1 (SEPTEMBER – OCTOBER)</b>	<b>AUTUMN 2 (NOVEMBER – DECEMBER)</b>	<b>SPRING 1 (JANUARY – FEBRUARY)</b>	<b>SPRING 2 (FEBRUARY – MARCH)</b>	<b>SUMMER 1 (APRIL – MAY)</b>	<b>SUMMER 2 (JUNE – JULY)</b>
<b>YEAR 7 Careers Advisor attends Parents Evening.</b>	<ul style="list-style-type: none"> <li>PSHE activity: Pupils will complete a series of self awareness activities during PSHE</li> <li>Careers letter/pamphlet sent home to all year groups that Signposts pupils and parents to the careers Section of the school website and informs them how to use the various websites For independent careers guidance.</li> <li>Curriculum and Careers: One Entry Task and careers HW per half term.</li> </ul>	<ul style="list-style-type: none"> <li>Careers Café: PDSA, Animal care</li> <li>Curriculum and Careers: One Entry Task and careers HW per half term</li> </ul>	<ul style="list-style-type: none"> <li>Curriculum and Careers: One Entry Task and careers HW per half term</li> </ul>	<ul style="list-style-type: none"> <li>Curriculum and Careers: One Entry Task and careers HW per half term</li> <li>National Careers and Apprenticeship Week: All curriculum areas will deliver a careers based lesson. This will be used to inspire pupils and raise awareness of the variety of careers that are linked to their subject to connect students learning to 'real life'.</li> </ul>	<ul style="list-style-type: none"> <li>Curriculum and Careers: One Entry Task and careers HW per half term</li> <li>Careers Convention: Pupils will be invited to our annual careers convention. Pupils will have the opportunity to speak to over 25 employers and apprenticeship providers</li> </ul>	<ul style="list-style-type: none"> <li>Curriculum and Careers: One Entry Task and careers HW per half term</li> </ul>
<b>YEAR 8 Careers Advisor attends Parents Evening.</b>	<ul style="list-style-type: none"> <li>Careers letter/pamphlet sent home to all year groups that Signposts pupils and parents to the careers Section of the school website and informs them how to use the various websites For independent careers guidance</li> <li>Curriculum and Careers: One Entry Task and careers HW per half term</li> </ul>	<ul style="list-style-type: none"> <li>Careers Café: PDSA, Animal care</li> <li>Curriculum and Careers: One Entry Task and careers HW per half term</li> </ul>	<ul style="list-style-type: none"> <li>Curriculum and Careers: One Entry Task and careers HW per half term</li> <li>Year 9 Pathways launch assembly.</li> </ul>	<ul style="list-style-type: none"> <li>Curriculum and Careers: One Entry Task and careers HW per half term</li> <li>National Careers and Apprenticeship Week: All curriculum areas will deliver a careers based lesson. This will be used to inspire pupils and raise awareness of the variety of careers that are linked to their subject to connect students learning to 'real life'.</li> </ul>	<ul style="list-style-type: none"> <li>Invited to lunchtime drop-in sessions with employers, and education and training providers.</li> <li>Careers Convention: Pupils will be invited to our annual careers convention. Pupils will have the opportunity to speak to over 25 employers and apprenticeship providers</li> <li>Curriculum and Careers: One Entry Task and careers HW per half term</li> </ul>	<ul style="list-style-type: none"> <li>Curriculum and Careers: One Entry Task and careers HW per half term</li> <li>Invited to lunchtime drop-in sessions with employers, and education and training providers.</li> </ul>
<b>YEAR 9 Careers Advisor attends Parents Evening.</b>	<ul style="list-style-type: none"> <li>Careers letter/pamphlet sent home to all year groups that Signposts pupils and parents to the careers Section of the school website and informs them how to use the various websites For independent careers guidance</li> <li>Curriculum and Careers: One Entry Task and careers HW per half term</li> </ul>	<ul style="list-style-type: none"> <li>Careers Café: PDSA, Animal care</li> <li>Curriculum and Careers: One Entry Task and careers HW per half term</li> </ul>	<ul style="list-style-type: none"> <li>Curriculum and Careers: One Entry Task and careers HW per half term</li> </ul>	<ul style="list-style-type: none"> <li>Year 9 Pathways choices made with CEIAG provided to pupils and parents about the value of each curriculum area, including Labour Market Information.</li> <li>The UK University &amp; Apprenticeship Search fair</li> <li>Curriculum and Careers: One Entry Task and careers HW per half term</li> <li>National Careers and Apprenticeship Week: All curriculum areas will deliver a careers based lesson. This will be used to inspire pupils and raise awareness of the variety of careers that are linked to their subject to connect students learning to 'real life'.</li> </ul>	<ul style="list-style-type: none"> <li>Curriculum and Careers: One Entry Task and careers HW per half term</li> <li>1:1 guidance provided to EHCP pupils by the Careers Adviser in preparation for attendance at Annual Review meetings.</li> <li>Careers Convention: Pupils will be invited to our annual careers convention. Pupils will have the opportunity to speak to over 25 employers and apprenticeship providers</li> </ul>	<ul style="list-style-type: none"> <li>Curriculum and Careers: One Entry Task and careers HW per half term</li> <li>1:1 guidance provided to EHCP pupils by the Careers Adviser in preparation for attendance at Annual Review meetings.</li> </ul>
<b>YEAR 10 Careers Advisor attends Parents Evening.</b>	<ul style="list-style-type: none"> <li>Welcome to Key Stage 4 Evening includes an overview of the CEIAG Strategy for Parents and Carers</li> <li>Careers letter/pamphlet sent home to all year groups that Signposts pupils and parents to the careers Section of the school website and informs them how to use the various websites For independent careers guidance</li> <li>Curriculum and Careers: One Entry Task and careers HW per half term</li> </ul>	<ul style="list-style-type: none"> <li>Local FE colleges, Apprenticeship Providers and Greater Manchester Higher attend Year 10 Progress Evening.</li> <li>Launch of the GM Higher Brilliant Club for High Attainers</li> <li>Careers Café: PDSA, Animal care</li> <li>Curriculum and Careers: One Entry Task and careers HW per half term</li> <li>My Perfect University Challenge</li> <li>Medical Mavericks</li> </ul>	<ul style="list-style-type: none"> <li>Careers Assemblies: Bolton College, Wigan and Leigh College and SJR College</li> <li>Curriculum and Careers: One Entry Task and careers HW per half term</li> <li>Graduation from the Brilliant Club</li> </ul>	<ul style="list-style-type: none"> <li>The UK University &amp; Apprenticeship Search fair</li> <li>Curriculum and Careers: One Entry Task and careers HW per half term</li> <li>National Careers and Apprenticeship Week: All curriculum areas will deliver a careers based lesson. This will be used to inspire pupils and raise awareness of the variety of careers that are linked to their subject to connect students learning to 'real life'.</li> <li>Greater Manchester Higher assembly to promote their University Summer Schools.</li> </ul>	<ul style="list-style-type: none"> <li>Assembly- Work Experience 'What if?'</li> <li>Careers Assemblies: Bolton Sixth Form College and Winstanley College</li> <li>Work Experience Visits</li> <li>Curriculum and Careers: One Entry Task and careers HW per half term</li> <li>Careers Convention: Pupils will be invited to our annual careers convention. Pupils will have the opportunity to speak to over 25 employers and apprenticeship providers</li> </ul>	<ul style="list-style-type: none"> <li>Curriculum and Careers: One Entry Task and careers HW per half term</li> <li>Assembly- Work Experience &amp; Employability Skills.</li> <li>Attendance at GM Higher Summer Schools (individual basis)</li> <li>1:1 guidance provided to EHCP pupils by the Careers Adviser in preparation for attendance at Annual Review meetings.</li> </ul>
<b>YEAR 11 Careers Advisor attends Parents Evening.</b>	<ul style="list-style-type: none"> <li>Welcome to Year 11 Evening includes an overview of the CEIAG Strategy for Parents and Carers, with the local FE colleges, GM Higher and Apprenticeship providers in attendance.</li> <li>Careers letter/pamphlet sent home to all year groups that Signposts pupils and parents to the careers Section of the school website and informs them how to use the various websites For independent careers guidance</li> <li>Curriculum and Careers: One Entry Task and careers HW per half term</li> <li>1:1 interviews with our careers advisor</li> <li>Careers Assemblies: Winstanley College, Bolton College, Wigan and Leigh College, Wigan Warriors, SJR College</li> </ul>	<ul style="list-style-type: none"> <li>1:1 guidance provided to EHCP pupils by the Careers Adviser in preparation</li> <li>Pupils provided with resources, time and support during Form Time to complete their Personal Statement ready for the post-16 applications.</li> <li>Careers Café: PDSA, Animal care</li> <li>Careers Assembly: Creative Careers, St Helens College, Bolton Sixth Form College, Deanary Sixth Form</li> <li>1:1 interviews with our careers advisor</li> <li>Curriculum and Careers: One Entry Task and careers HW per half term</li> </ul>	<ul style="list-style-type: none"> <li>Invited to lunchtime drop-in sessions with employers, and education and training providers.</li> <li>Local FE colleges, Apprenticeship Providers and Greater Manchester Higher attend Year 11 Progress Evening.</li> <li>Assemblies from each of the main local providers including 6<sup>th</sup> Form colleges, 6<sup>th</sup> Form schools, and Apprenticeship providers.</li> <li>Curriculum and Careers: One Entry Task and careers HW per half term</li> <li>'Findanaprenticeship.gov' during Form Time.</li> <li>Assemblies from each of the main local providers including 6<sup>th</sup> Form colleges, 6<sup>th</sup> Form schools, and Apprenticeship providers.</li> <li>1:1 guidance meetings provided to all pupils, prioritising EHCP pupils, followed by PP, SEND and other.</li> </ul>	<ul style="list-style-type: none"> <li>The UK University &amp; Apprenticeship Search fair</li> <li>1:1 interviews with our careers advisor</li> <li>Curriculum and Careers: One R5 and careers HW per half term</li> <li>National Careers and Apprenticeship Week: All curriculum areas will deliver a careers based lesson. This will be used to inspire pupils and raise awareness of the variety of careers that are linked to their subject to connect students learning to 'real life'.</li> <li>1:1 guidance meetings provided to all pupils, prioritising EHCP pupils, followed by PP, SEND and other.</li> <li>Careers Adviser in attendance at Year 11 Revision Launch evening, providing 1:1 meetings involving parents and carers where requested.</li> <li>Local education and training providers in attendance at Year 11 Revision evening.</li> </ul>	<ul style="list-style-type: none"> <li>Invited to lunchtime drop-in sessions with employers, and education and training providers.</li> <li>1:1 guidance meetings provided, revisiting targeted pupils.</li> <li>Assembly- Life after DTRB, DTRB Leavers social media page launched.</li> <li>Careers Convention: Pupils will be invited to our annual careers convention. Pupils will have the opportunity to speak to over 25 employers and apprenticeship providers</li> <li>Curriculum and Careers: One Entry Task and careers HW per half term</li> </ul>	<ul style="list-style-type: none"> <li>Leavers invited to attend further guidance meetings are required.</li> <li>Communication made and further information provided remotely using the DTRB Leavers social media page.</li> <li>Support available on GCSE Results Day includes the attendance of the Careers Adviser and the School Liaison teams from each of the local colleges and apprenticeship providers.</li> <li>Permissions are sought from the leavers to permit communication and sharing of destination data between school and the local authority to aid collaborative support.</li> </ul>

Exposure of pupils to the 6 growth industries within Greater Manchester remains a priority for our Applied Learning curriculum and employer encounters; thus improving the readiness of young people to enter the local labour market. Labour Market Information is made accessible for all stakeholders; pupils, parents and teachers are encouraged to engage with the data to inform discussions around careers and post-16 options.

**CEIAG  
STRUCTURE**



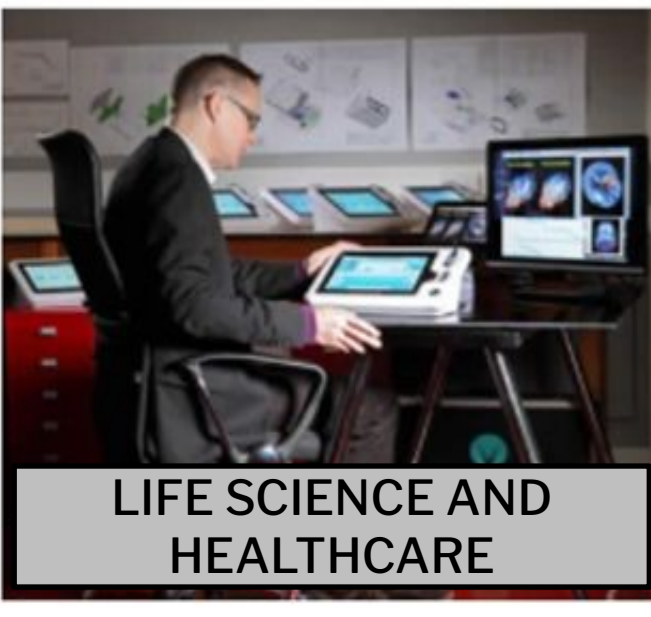
**CREATIVE MEDIA & TECHNOLOGY**



**ENERGY & ENVIRONMENT**



**FINANCIAL, PROFESSIONAL & BUSINESS SERVICES**



**LIFE SCIENCE AND HEALTHCARE**



**LOGISTICS**



**ADVANCED MANUFACTURING**

**Post 16 Support:**

- Contact is maintained using DTRB Leavers' social media page.
- Motivational information, LMI, employment, education and training opportunities are promoted generally and to specifically targeted leavers.
- Support with the update of Personal Statements, CVs and letters of application is offered and leavers are invited back into school to meet with the Careers Adviser.
- School receives an update from the authority. Interventions are made for NEET or suspected NEET leavers on an individual basis.

<b>EHCP</b>	Pupils with an EHCP receive 1:1 CEIAG meetings from Year 9-11, and in Year 11 the support is limitless. The Careers Adviser attends Annual Review meetings from Year 9-11, to liaise with relevant agencies to support parents and carers with the transition too. The EHCP Mentor will also provide support with individual needs, supporting travel arrangements, attendance at open events and interviews.
<b>PP</b>	Pupils with a PP status receive their 1:1 guidance meetings after EHCP pupils have been seen. Parental engagement is a priority for these young people and as such parents/ carers are invited in to attend the guidance meetings. A record of the meeting and any information to support the action plan will be posted home.
<b>SEND</b>	Pupils with a SEND status will be prioritised above non-SEND and will receive their 1:1 guidance meeting in advance. The Careers Adviser would be familiar with the individual's SEND and make appropriate suggestions for post-16 options, collaborating with the providers and the in-school Mentors. Parents are kept informed at events and also with hard copies of interview records posted home.
<b>LAC</b>	Depending on any additional needs, LAC pupils will then be seen in advance of any pupils without a specific profile. Their action plans and supporting information will be provided to relevant stakeholders.

**DESTINATION DATA**

- From our 2019 cohort 98% of NPP students have gone on to education, employment and training (2% NEET)
- From our 2019 cohort 96% of NPP students have gone on to education, employment and training (4% NEET)
- From our 2018 cohort 98% of NPP students have gone on to education, employment and training (2% NEET)
- From our 2018 cohort 97% of NPP students have gone on to education, employment and training (3% NEET)

<b>Education Provider</b>	<b>Percentage</b>
Wigan and Leigh College	65
St John Rigby College	12
Other providers – Coaching Connexions, West Lancs College, Wigan Athletic, Wigan warriors, Runshaw and Growth Co	7
Pendleton college	3
St Helens College	2
Winstanley College	2
apprenticeships	3
NEET	3
<b>Course Levels</b>	
<b>Level</b>	<b>Percentage</b>
3 (A levels BTEC extended diploma)	40
2 (NVQ2 or BTEC 2)	38
1 (NVQ1 or BTEC 1)	26
Entry level	4
Other	8



**Good Career Guidance:  
Start mapped to the Gatsby benchmarks**

- BENCHMARK 1: A STABLE CAREERS PROGRAMME**
  - A free and sustainable online platform for delivering careers information
  - Underpinned by a programme for students in Years 7 to 13
  - Accessible to all students, staff and parents
- BENCHMARK 2: LEARNING FROM CAREER & LABOUR MARKET INFORMATION**
  - Localised career and labour market information from LMI for All
  - Impartial information on all study options at GCSE, post-16 and 18
  - Live course information and apprenticeship vacancies
- BENCHMARK 3: ADDRESSING THE NEEDS OF EACH PUPIL**
  - A student profile to personalise content, career and future study information
  - Learning modules for all ages to guide students through moments of choice
  - Tools to capture and share inspiring alumni stories
- BENCHMARK 4: LINKING CURRICULUM LEARNING TO CAREERS**
  - Subject-led careers and future study search
  - Employer-led information linking subject knowledge application in work
  - Content and tools promoting classroom skills-learning to employability
- BENCHMARK 5: ENCOUNTERS WITH EMPLOYERS AND EMPLOYEES**
  - Employer profiles offering an insight in to work and employment
  - Employer-led skills content and Three Minute Hero career stories
  - An online Locker to record and evidence encounters with employers
- BENCHMARK 6: EXPERIENCES OF WORKPLACES**
  - Advice to help prepare for and make the most of work placements and visits
  - Action plan tools to manage the process of securing work experience
  - An online Locker to evidence impact of work experience and part time jobs
- BENCHMARK 7: ENCOUNTERS WITH FURTHER AND HIGHER EDUCATION**
  - Learning modules to explore and demystify all post-16 and 18 pathways
  - Comprehensive, impartial information on all academic and vocational routes
  - Every post-16 and post-18 provider profiled with full course information
- BENCHMARK 8: PERSONAL GUIDANCE**
  - Student registration data and personal profiles to inform guidance interviews
  - Age-appropriate modules to prepare students for key moments of choice
  - Action plan tools to support and enhance the guidance process